

**Specifications**

Nominal Voltage		12 V
Capacity (25°C)	20HR(10.5V)	7.5Ah
	10HR(10.5V)	7Ah
	1HR(9.60V)	4.88Ah
Dimension	Length	151 ± 1.5mm (5.94inch)
	Width	65 ± 1mm (2.56inch)
	Height	94 ± 1mm (3.70inch)
	Total Height	100 ± 1mm (3.94inch)
Approx. Weight		2.3kg (5.07lbs) ± 5%
Terminal type		T1/T2
Internal resistance (Fully charged, 25°C)		Approx. 22mΩ
Capacity affected by temperature (20HR)	40°C	102%
	25°C	100%
	0°C	85%
	-15°C	65%
Self-discharge (25°C)	3 month	Remaining Capacity: 91%
	6 month	Remaining Capacity: 82%
	12 month	Remaining Capacity: 65%
Nominal operating temperature		25°C ± 3°C (77°F ± 5°F)
Operating temperature range	Discharge	-15°C ~ 50°C (5°F ~ 122°F)
	Charge	-10°C ~ 50°C (14°F ~ 122°F)
	Storage	-20°C ~ 50°C (-4°F ~ 122°F)
Float charging voltage(25°C)		13.60 to 13.80V Temperature compensation: -18mV/°C
Cyclic charging voltage(25°C)		14.50 to 14.90V Temperature compensation: -30mV/°C
Maximum charging current		2.25A
Terminal material		Copper
Maximum discharge current		112.5A (5 sec.)
Designed floating life(20°C)		10years

- ◆ Absorbent glass mat technology;
- ◆ Recognized by UL & CE;
- ◆ ABS container.

**Constant Current Discharge Characteristics (A, 25°C)**

F.V/TIME	5min	10min	15min	30min	60min	2h	3h	4h	5h	10h	20h
9.60V	28.5	18.0	14.3	7.95	4.88	2.66	1.91	1.53	1.30	0.71	0.381
9.90V	27.6	17.5	13.9	7.79	4.80	2.65	1.90	1.52	1.29	0.71	0.379
10.2V	26.5	16.7	13.4	7.55	4.68	2.63	1.89	1.51	1.28	0.70	0.377
10.5V	25.4	16.0	12.9	7.37	4.59	2.59	1.88	1.50	1.28	0.70	0.375
10.8V	23.9	15.1	12.3	7.10	4.45	2.52	1.82	1.46	1.24	0.68	0.368

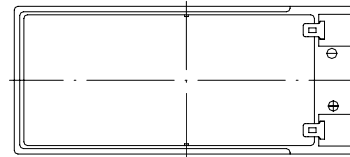
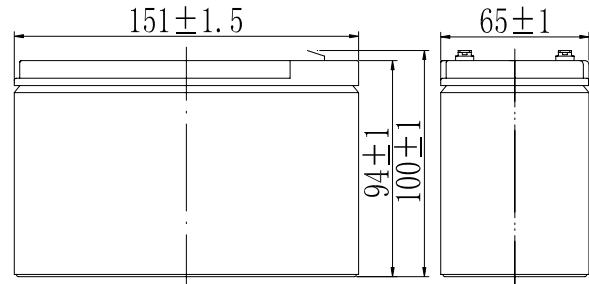
**Constant Power Discharge Characteristics (Watt, 25°C)**

F.V/TIME	5min	10min	15min	30min	60min	2h	3h	4h	5h	10h	20h
9.60V	318	203	162	91.1	56.5	31.2	22.7	18.2	15.5	8.50	4.57
9.90V	309	197	159	89.3	55.6	31.0	22.6	18.1	15.4	8.46	4.55
10.2V	296	189	153	86.6	54.2	30.7	22.4	18.0	15.3	8.42	4.53
10.5V	283	181	148	84.5	53.1	30.3	22.3	17.9	15.2	8.37	4.50
10.8V	267	171	140	81.4	51.5	29.5	21.6	17.3	14.8	8.20	4.41

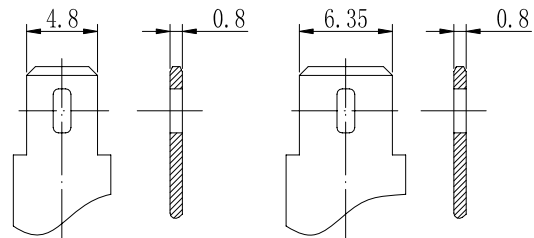
Note: The above characteristics data can be obtained within three charge/discharge cycles.



**Dimensions**



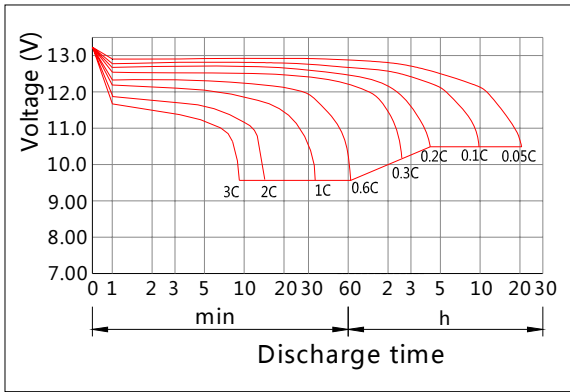
**Terminal**



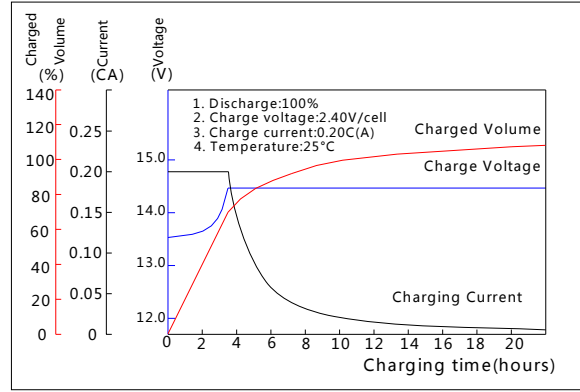
Terminal T1

Terminal T2

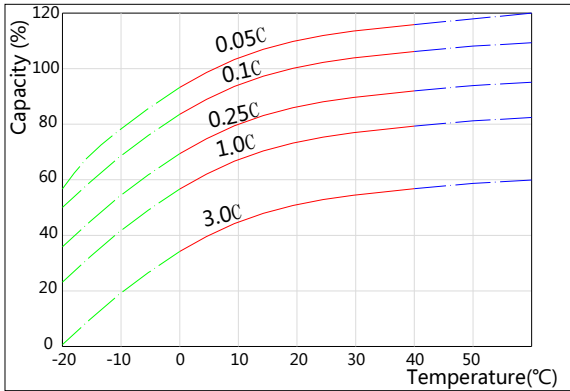
**Discharge Characteristics(25°C)**



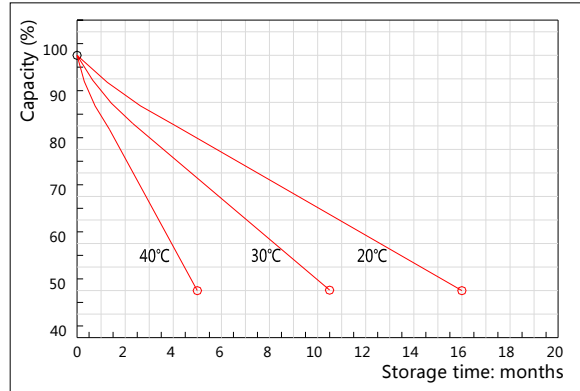
**Charging Characteristics(25°C)**



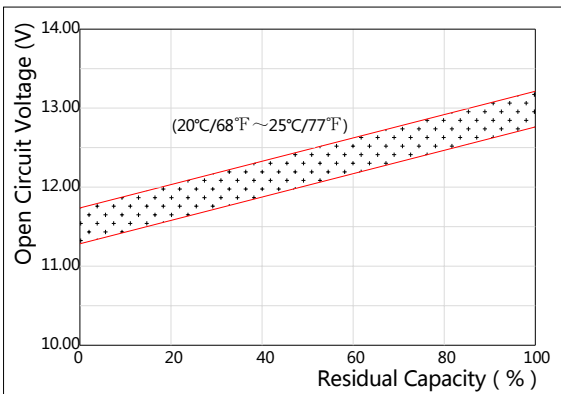
**Effect of Temperature on Capacity**



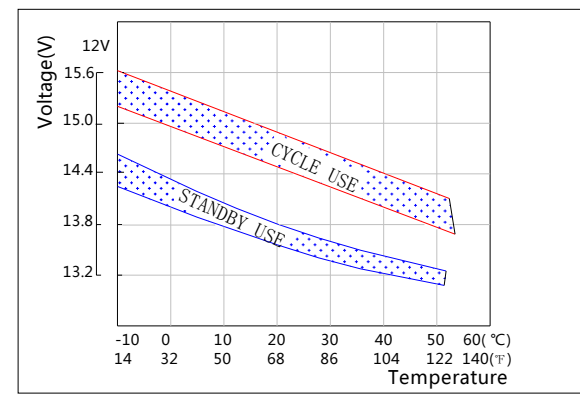
**Self-discharge Characteristics**



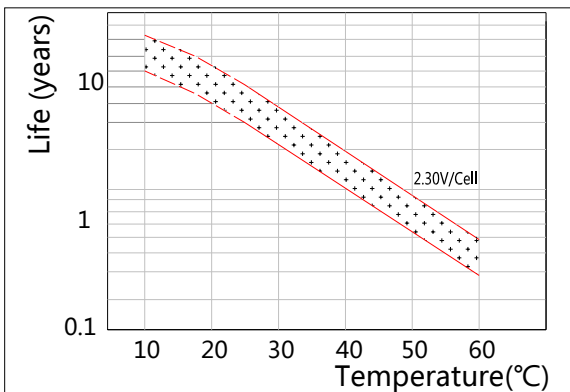
**The Relationship for Open Circuit Voltage and Residual Capacity (25°C)**



**The Relationship for Charging Voltage and Temperature**



**Floating Life on Temperature**



**Cycle Life on D.O.D(25°C)**

